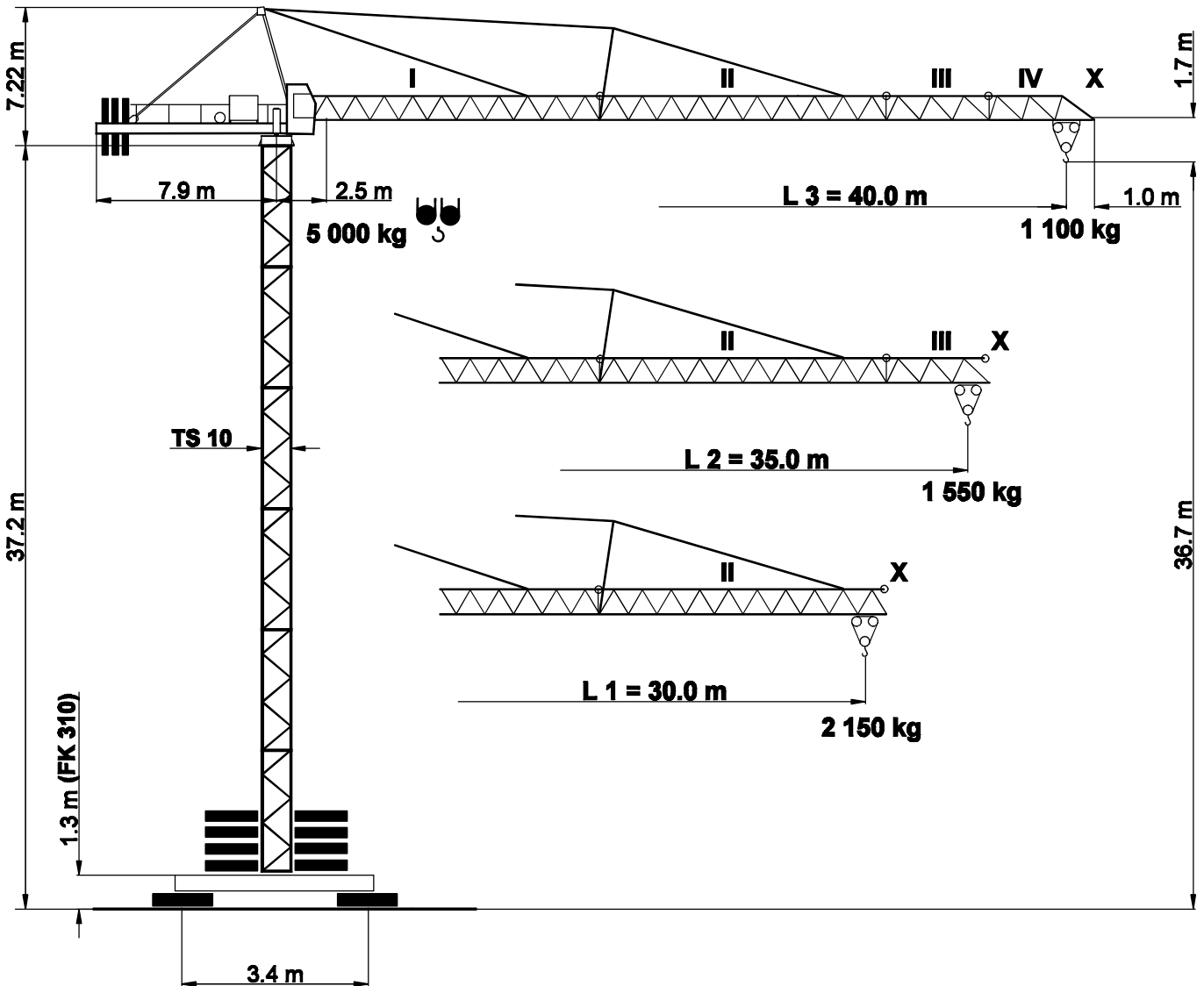
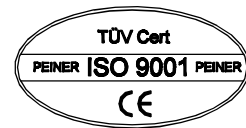


PEINER SK 56

DIN 15018	H1 / B3
BGL 2125	0056
Max. Tragfähigkeit Lifting capacity Force de levage	5.0 t



Unsere Vertretung:
Our representative:
Notre représentant:

SK 56

Ausladung und Tragfähigkeit / Radius and capacity / Portée et charge

Ausleger Jib Flèche	Max. Tragfähigkeit max. capacity charge max.	Ausladung (m) und Tragfähigkeit (t) Radius (m) and capacity (t) Portée (m) et charge (t)																
		12	14	16	18	20	22	24	26	28	30	32	34	35	36	38	40	
m	5.0 t																	
L3	40.0	2.5 - 11.3 m	4.63	3.86	3.30	2.88	2.54	2.27	2.05	1.87	1.71	1.57	1.45	1.35	1.30	1.26	1.17	1.10
L2	35.0	2.5 - 12.9 m	5.0	4.53	3.88	3.38	2.99	2.68	2.42	2.21	2.02	1.86	1.73	1.61	1.55			
L1	30.0	2.5 - 14.4 m	5.0	5.0	4.44	3.87	3.43	3.08	2.78	2.54	2.33	2.15						

Geschwindigkeiten / Speeds / Vitesses

PU S 4-50/2		v = \rightarrow 22 / 45 m / min.	4.0 kW	400 V 50 Hz 3 Ph
SR 5-90/3		v = 0 \rightarrow 25 m / min.	2 x 5.0 kW	
K SRA 55/4		v = 0 \rightarrow 0.75 min ⁻¹	4.4 kW	

HK max. = 90 m 2 - Lagen / 2 - layers / 2 - couches

Type PU 15-25/3 15.0 kW			\rightarrow 52 m / min	1 500 kg		\rightarrow 26 m / min	3 000 kg	Motorenleistung ges. Total motor output Puissance moteur (ohne/without/sans SR 5-90/3) ~ 25 kW
			\rightarrow 26 m / min	2 500 kg		\rightarrow 13 m / min	5 000 kg	
			\rightarrow 6 m / min			\rightarrow 3 m / min		

Gegengewichtsballast / Counterweight / Contrepoids

Ausleger / Jib / Flèche		L 1	L 2	L 3
Gegengewicht Counterweight Contrepoids	BG	9 450 kg	9 450 kg	9 450 kg
	[t]	3 x 3.15	3 x 3.15	3 x 3.15